

NOW  
NEW  
NEXT

In this way,

newly,

tomorrow

leads to INFAC.

---

In 1969,

Even before the word innovative company' existed,  
And when 'professional company' was yet familiar,  
INFAC specialized in automotive parts and  
has kept its place for 50 years.

---

In view of INFAC,

innovation is keeping today's safety and convenience  
as well as bringing out new surprises for tomorrow.

---

INFAC will keep the word '100 years Innovative Company'  
INFAC promises Today to put quality,  
safety and customer first while  
keeping up with the market and the technology.



INFAC's goal is not to be  
the best in competition,  
But to be the best in quality.

There is a saying that history is a mirror of the future. If you look at the history of INFAC, you can predict the future of INFAC. Over the past 20 years, it has grown at an annual average rate of more than 15%. The strength of INFAC is based on patience and faithfulness, which can be summarized as a sense of responsibility.

Since 1969, first introduced as Korean automotive parts manufacturing industry, We have been strengthening our expertise by progressively expanding our business area to control cables, antennas, and actuators. Not only do we focus on automotive electronics but also develop parts in environmental friendly cars as a new growth engine for the future of automotive industry.

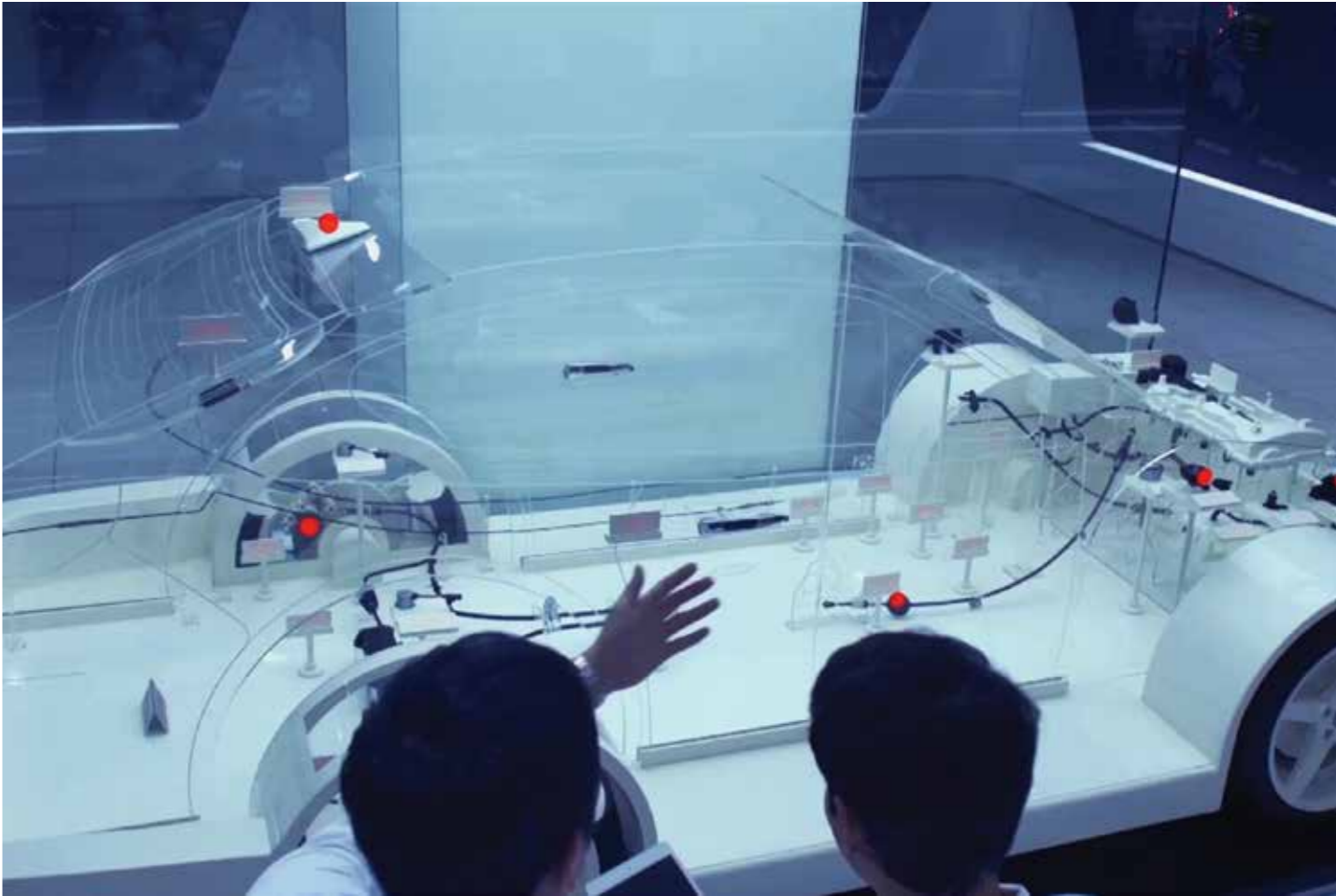
Today, INFAC does not focus on quantitative growth. Rather, INFAC focuses on qualitative growth which means improving technology and quality. Utilizing the integrated R&D center, we will maximize synergy for technical improvement, and development of new products with the utmost effort to achieve the best technology and quality.

For "INFINITE ACCURACY" that global customers can be satisfied with, INFAC's innovation and challenges will be continued.

Chairman of INFAC  
**Ohe Gil Choi**

INFAC  
KEYWORD 1

# INFAC NOW



- Quality
- Technology
- Communication
- Customer

Innovation,  
is it only for tomorrow?  
INFAC's innovation is  
in today's value.

INFAC's technology is directly linked to customer safety. Today's quality, technology, trust, and experience will lead to tomorrow's innovation. Today's INFAC is the result of more than 50 years of expertise with field experience gained by effective communication with customers. INFAC has trustworthy reputation in quality that you can trust and use right away. The future possibility of INFAC is based on the 'present' with enthusiasm.

INFAC  
KEYWORD 2

# INFAC NEW

- Future technology
- Infinite accuracy
- Zero defect
- Technology optimization



Does the word challenge  
only meaningful when  
it is leading to achievement,  
INFAC's challenge has meaning  
in the attempt itself.

The world talks about the success of INFAC, but INFAC considers attempt, challenge, and failure as the true success. INFAC has been constantly working to localize automotive parts by maintaining excellent workforce, making aggressive investments, and by working with overseas global companies. In the global automotive industry, INFAC has worked with the mindset that Korea will succeed with the help of INFAC, believing the ultimate innovation is having infinite accuracy and zero defects.

INFAC  
KEYWORD 3

# INFAC NEXT



- Emotional engineering
- Human-friendly enterprise
- Emotional management
- Sustainable social contribution

Will the future  
be better than now?  
INFAC's tomorrow is  
up to the people.

INFAC's technology for the future of cars is ultimately for people. Intelligent sensor, safe cars, high strength stability, and sensibility engineering. Considering what technology is for happiness and what engineering is for the people, INFAC commits/ dedicates entirely in people. In the mindset that only a satisfied person can create a promising technology, our advanced technology is deeply connected with employee welfare, social contribution, customer satisfaction, and cultivating talent.

PART 1

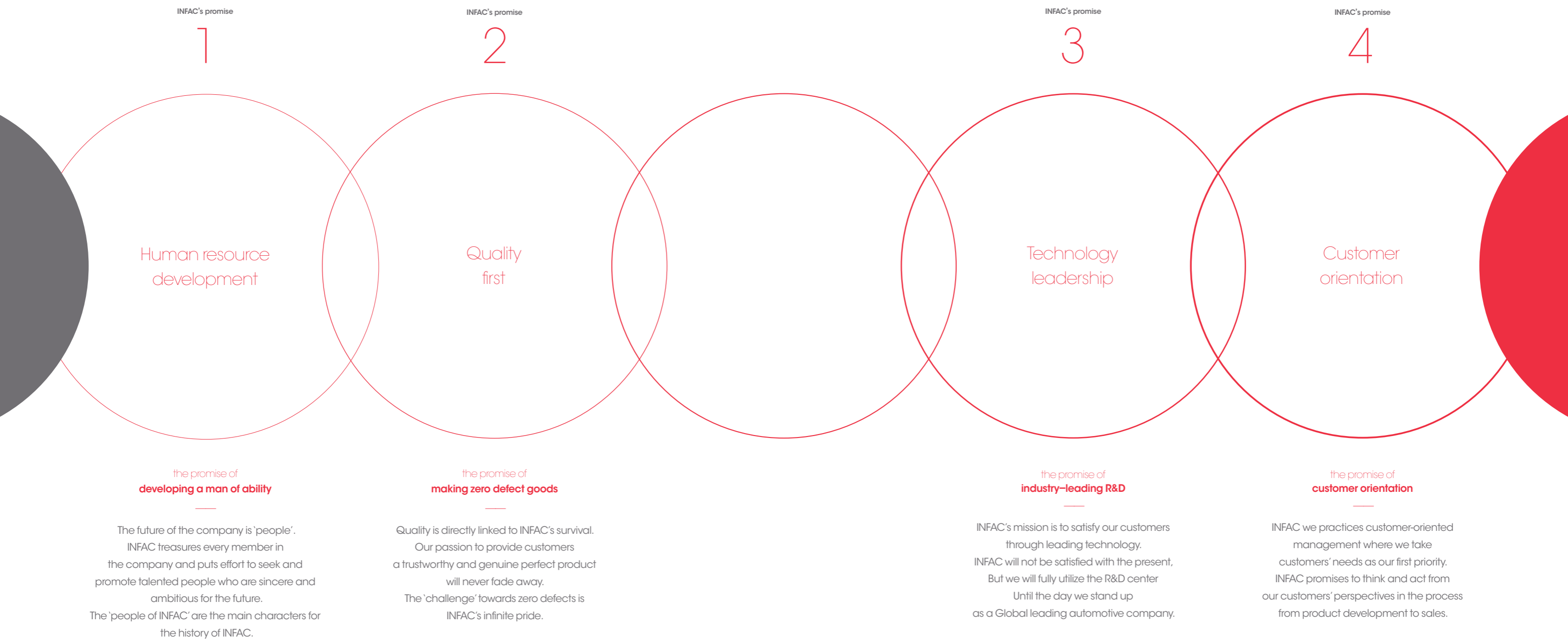
# NOW

Founded in 1969, INFAC's history is the history of innovation in automotive industry.

INFAC has recorded the past 50 years with challenge and leap to become the new history not only in Korea but also in China, India, Vietnam, Asia, North America, South America, and Europe.

- ▶ INFAC management philosophy
- ▶ INFAC history
- ▶ INFAC award & certification
- ▶ INFAC domestic business
- ▶ INFAC overseas business

The principle and promises that  
technology builds innovation and  
quality builds trust.  
This is the mindset of INFAC.



# INFAC

## HISTORY & AWARDS

INFAC has further expanded business globally as becoming Korea's leading manufacturer of automotive parts. INFAC's infinite accuracy moves endlessly towards the future of automotive industry.

1969, June  
Established

1991, January  
Ohe Gil Choi, appointed as the CEO of INFAC

1991, December  
Established Samyeong Automotive Parts Co. Ltd (Shim Yang China)

1994, August  
Established Samyeong Automotive Parts Co. Ltd (Beijing, China)

1994, December  
Completed INFAC Cheon-An factory

1998, April  
Started cable supply to Mazda Motors

1998, August  
Established INFAC India (Chennai, India)

1999, September  
Started cable supply to Honda Motors.

1999, December  
Signed an export contract of technology with Ark Automotive in Turkey

2000, March  
Started cable supply to Delphi Automotive System

2001, July  
New business Eaton Automotive  
Acquired solenoid valve & switch division Began production

2003, December  
Acquired Sungshin Tech Co., Ltd. Control cable business

2004, March  
Started antenna business (Sam Young Cable Incheon factory)  
SamYeong Cable change name to INFAC.

2004, September  
Listing from KOSDAQ to KOSPI

2004, November  
Established INFAC Yokowo (Japan Yokowo joint venture)

INFAC transfer antenna business  
> INFAC Yokowo (Currently INFAC Elecs)

2005, September  
Established Michigan Office (Detroit, USA)

2007, January  
Selected as GM, Chrysler control cable supplier

2007, August  
Completed INFAC Sanhe factory (Sanhe, China)

2007, December  
First smart key in Korea  
Started supply of antenna for LF  
> INFAC Yokowo (Currently INFAC Elecs)

2008, January  
Sungshin Tech CEO Woong-Seon Choi  
> Sungshin Tech (current INFAC Cable)

2008, January  
Acquisition of equity in INFAC Yokowo

2008, September  
Established INFAC North America (Kentucky, USA)

2009, March  
Woong-Seon Choi, appointed as the CEO of INFAC

2009, December  
INFAC Yokowo change name to INFAC Elecs  
> INFAC Elecs

2010, July  
Acquired Sungil Co. Ltd Car horn business

2012, January  
Expansion of INFAC India factory

2012, February  
Establish INFAC Chungju factory

2013, March  
Sungil Co. Ltd change name to INFAC Horn System  
Sungshin Tech change name to INFAC Cable

2013, September  
INFAC North America moved to new factory

2013, December  
INFAC Cable moved to new factory

2014, May  
Established INFAC Jiangsu (Yancheng, China)

2014, November  
Completed new integrated R&D Center  
> INFAC

INFAC Elecs moved to new factory  
> INFAC Elecs

2016, January  
Iran Cruise Company Peugeot P207 Combi antenna first supplied  
> INFAC Elecs

2017, May  
Completed INFAC Mexico factory (Monclova, Mexico)

### HISTORY

1969

### AWARDS

1996, April  
Awarded for achieving 10 million dollar export (Korea International Trade Association)

Selected as a superior technology company (Sungil)  
> Currently INFAC Horn System

1997, September  
Selected as a company with excellent quality competitiveness (National Technology Quality Institute)

1997, December  
Appointed as a good labor-management company (Ministry of Labor)

2001, April  
Awarded the Presidential Award for single PPM quality innovation

2003, February  
Selected as an excellent automotive parts company (Ministry of Commerce, Industry and Energy)

2004, October  
Selected as an excellent company for science and technology research (Ministry of Science and Technology)

2005, May  
Awarded Prime Minister Prize for single PPM quality innovation

2005, September  
Selected as an excellent labor management culture company (Ministry of Labor)

2006, September  
Improved quality and productivity Awarded by Minister of Commerce, Industry and Energy

2007, February  
Selected as an excellent automotive parts company (Ministry of Commerce, Industry and Energy)

2007, May  
Single PPM Quality innovations Silver Tower Medal

2007, July  
Selected as excellent partner (Hyundai MOBIS)  
> Sungshin Tech (Current INFAC Cable)

2008, April  
Selected as excellent partner (Chrysler)

2008, May  
Automotive Industry Development Awarded Minister of Knowledge Economy Award

2009, April  
Awarded Prime Minister Award for single PPM Quality Innovation

2009, May  
Awarded Minister of Knowledge Economy Award for the development of the automotive industry

2009, July  
Selected as an excellent labor-management culture company (Ministry of Labor)

2010, August  
Awarded Grand Prize in automotive parts industry (Hyundai Motor)

2010, November  
GM QSB (Quality System Basic) Certification  
> INFAC

2011, June  
Acquired Leno Samsung AESA system certification  
> INFAC Elecs

2011, July  
Selected as supplier of excellent quality and parts (Hyundai MOBIS)

### AWARDS

2012, April  
Selected as world class 300 (Ministry of Knowledge Economy)  
> INFAC Elecs

2012, December  
Awarded \$70 million export (Korea International Trade Association)  
Certified as innovative small and medium business (INNO-BIZ) (AAA Level)  
> INFAC Elecs

2013, January  
CEO Woong-Seon Choi Selection of a person who moves the Korean economy in 2013. (Fortune Korea)

2013, March  
Selected as an excellent partner (SOY) (3 consecutive years, 2010-2012) (GM)  
Selected as an excellent partner  
> INFAC Horn System

2013, May  
Awarded the 10th Minister of Industry Prize

2013, September  
[8 bands for wireless connectivity based deployment antenna integration system development] WORLD CLASS 300  
Selected as project for technology innovation support project  
> INFAC Elecs

2013, December  
Awarded zero PPM for 12 consecutive months (2 consecutive years, 2012-2013) (Hyundai Motor Manufacturing Alabama, LLC)  
> INFAC North America

2014, March  
KD excellent partner award (Hyundai Glovis)  
> INFAC Elecs

2014, November  
GM Supplier Quality Excellence Award  
> INFAC Elecs

2015, January  
Hyundai-Kia Motors cooperation award  
INFAC CEO Woong-Seon Choi  
> INFAC

2015, June  
Campbellsville's City Governor's Cup Co-recipient  
> INFAC North America

2015, December  
INFAC, Korea Ministry of Commerce, Industry and Energy prize (2015 CS Excellent Company)  
> INFAC Vina

2016, June  
GM Supplier Quality Excellence Award  
> INFAC Elecs

Hyundai Motor India Special Award  
> INFAC India

2016, October  
R&D Partners Tech Day Excellent Technology Award  
> INFAC Elecs

Achieved zero PPM for 55 consecutive months (2012-2016, Kia Motor Manufacturing Georgia, Inc)  
> INFAC North America

2016, November  
Global Standard Management Award  
Social Contribution Award  
> INFAC



Oh-Gil Choi, appointed as CEO, January 1991



Early ShimYang Plant in the foreground



Single PPM Quality Innovation Silver Award, May 2007



INFAC Sanhe factory completed, August 2007



Listed on exchange market, September 2004



Supplier of the Year 2010 (GM) 2011.3.



R&D Partners Tech Festivals, October 2016



INFAC Mexico expansion ceremony, June 2016

# INFAC

## NETWORK — DOMESTIC

Since its foundation in 1969,  
The light at INFAC has not turned off for 24 hours.  
In order to become a comprehensive automotive parts company  
INFAC's light will continue to shine brighter and  
spread throughout the country.



INFAC



INFAC will become a global comprehensive automotive parts company with its own technology development.

INFAC first opened in June of 1969 at Seoul SeongSu dong, aiming to localize automotive cables. INFAC has been producing control cables, ignition cables, etc. professionally. In 2003, INFAC produced solenoid valve, switch, etc., which resulted in great success. In addition, with the new factory in Chungju, we are preparing for the next generation of electronic parking brake, electric vehicle, and hybrid battery parts.

Date of establishment	: June 25, 1969
Listing date	: October 1994 (listed on the KOSDAQ), September 2004 (listed on the KOSPI)
Main Products	: Actuator, solenoid valve, control cable, batter pack housing, etc.
Contact	: Seoul, Songpa-gu Baekje Highway 450 / 02-3432-3333

<b>INFAC Relation</b>	
<b>INFAC integrated technology research center</b>	: 53, Saneop-ro 155beon-gil, Gwonseon-gu, Suwon-si, Gyeonggi-do, Republic of Korea / 031-491-2431
<b>INFAC Cheonan factory</b>	: 47, 2gongdan 6-gil, Seobuk-gu, Cheonan-si, Chungcheongnam-do, Republic of Korea / 041-621-6191
<b>INFAC Chungju factory</b>	: 105, Cheomdansaneop 3-ro, Bon-ri, Daesowon-myeon, Chungju-si, Chungcheongbuk-do, Republic of Korea / 043-723-2323

INFAC Cable



Becoming the world’s leading automotive parts manufacturer.

INFAC was established in April 1996 at Chungcheongbuk-do, aiming to become a specialized maker of automotive parts. Specializing in production of control cable, solenoid valve, electronic and hybrid battery parts. We supply our product to Hyundai, Kia, GM, Ssangyong, and Porsche. In 2013, we constructed a factory and produced high quality products based on our stabilized system, and we have been recognized for our quality from various domestic and foreign automobile businesses. Also in 2015, we signed MOU contract to support student scholarships for the development of the social community, and we are working towards making a better community.

Date of establishment	: April 2, 1996
Main products	: Control cable, battery pack housing
Contact	: 1819, Jinseong-ro, Gakhoe-ri, Geumwang-eup, Eumseong-gun, Chungcheongbuk-do, Republic of Korea 043-535-5011

INFAC Elecs



As a technology leader in the field of vehicle antennas Our goal is to become a Global vehicle RF module System Company

INFAC Elecs is a compound word of ‘ELECTRONIC SYSTEM’ which can be defined as a complete technology independence by localizing all items. As we expanded our antenna business scope to electronic/communication systems, and we have been focusing on technology independence by localizing micro, combination, glass, LF, BCM, and passive antenna production. In 2012, INFAC Elecs was selected as <World Class 300 Project Company> by Ministry of Knowledge Economy, and in 2014, INFAC Elecs moved to Suwon city to expand the market and diversify by focusing on developing new technology.

Date of establishment	: November 1, 2004
Main products	: Car antenna, feeder cable, etc.
Contact	: 53, Saneop-ro 155beon-gil, Gwonseon-gu, Suwon-si, Gyeonggi-do, Republic of Korea / 031-294-4700

INFAC Horn systems



Leading the global market As a growing Horn company

INFAC Horn System is an automotive division that specializes in producing horns. It was founded in 1991 in Cheonan as a company that aims to become a world-class car horn company. INFAC Horn System specializes in the production of electric horn, air horn, etc., and supply to Hyundai-Kia Motors, Ssangyong, Renault Samsung and other automotive companies as well as Doosan Infracore, Clark, and other heavy equipment manufacturers. We have kept our product competitive for over 20 years of by continuous investment and quality innovation. To secure price competitiveness and stable supply of our products, we expanded our manufacturing location to China in 2002 and in Vietnam in 2008.

Date of establishment	: August 12, 1991
Main product	: Car Horn
Contact	: Yongwon 1-gil, Seongnam-myeon, Dongnam-gu, Cheonan-si, Chungcheongnam-do, Republic of Korea / 041-553-6262

# INFAC

## NETWORK — OVERSEAS

There is no nationality nor borders between today's quality and tomorrow's technology.  
Starting with China in 1991, INFAC has been continuously growing the business by  
exporting to Asia, America, Europe, and etc.,



INFAC Sanhe



INFAC Sanhe was established in August of 1994 in Beijing to target Chinese market and has expanded to Sanhe in August 2007. INFAC Sanhe control cables, battery cables, ignition cables, car cables, car antennas and feeder cables for Beijing Hyundai, Dongfeng, GM, Chrysler, Beijing train, Hyundai Mobis, etc. With the recent acquisition of new orders from Geely China, we are planning to target local companies in China.

Date of establishment	: August 2, 1994
Main product	: control cable, battery cable, antenna, feeder cable, etc.
Address	: North of the Northern Ring Road in Yanjiao Economic & Technological Development Zone In Sanhe City, China

INFAC has achieved good results In the Chinese market.

INFAC India



INFAC India was established in August 1998 in Chennai to develop automotive emerging markets. INFAC India produce control cable, battery cable, ignition cable and supply to Hyundai Motor India, Hyundai Mobis, Turkey HAOS, GMI and Volkswagen. INFAC India was expanded in January 2012 for stable supply of products.

Date of establishment	: August 15, 1998
Main product	: control cable, battery cable, ignition cable, feeder cable, etc.
Address	: No.113 Ellaiamman Koil Street, Keel Padappai Village, Sriperumbudur Taluk, Kanchipuram Dist-601 301, India

Using India as a hub, we are growing as the largest cable maker in Southwest Asia and Southern Europe markets.

INFAC NA



INFAC North America was established in September 2008 in Kentucky to establish production base in America. INFAC North America specializes in production of control cables supplying to HMMA, KMMG, GM, and Chrysler. As a result of strict quality requirements and a continuous improvement, INFAC North America has achieved 55 months (4years and 7 months) of zero defects and received 'Zero PPM' award. Also in 2013, we have built a new facility to produce horn, feeder cable and other parts for diversification.

Date of establishment	: September 26, 2008
Main products	: control cable, horn, feeder cable, antenna
Address	: 1 INFAC Drive, Campbellsville, KY.42718 U.S.A.

A growing power of North America is a steppingstone to global INFAC.

INFAC Michigan Office



Michigan Office was established in September 2005 for the purpose of exploring new market and supporting sales & engineering for customers in North America. Main tasks include securing new customers in North America and Europe and act as a window for communicating with existing overseas customers to increase global sales. Also to lead in research and benchmarking activities in North America and Europe. By sharing information with INFAC's sales headquarter and research institutes we will use this as a base for expanding the market.

Date of establishment	: September 30, 2005
Main business	: technical and sales support
Address	: 4191 Pioneer Drive, Walled Lake, MI 48390 U.S.A.

Michigan Office serves as a bridge for automotive markets in Europe and North America, including exploring new markets for INFAC.

INFAC Vina



INFAC Vina was established in 2007 in Chon Thanh District, Binh Phuoc Vietnam to secure price competition and to secure base in Southeast Asia. Specializes in disc horn production of Φ 75, Φ78, Φ85, Φ100 and supply to INFAC North America, INFAC India and Vietnam domestic markets.

Date of Establishment	: August 8, 2007
Main products	: Horn, BCM antenna
Address	: Lot C2, KCN Minh Hung-Han Quoc Industrial Park Minh Hung Commune, Chon Thanh District, Binh Phuoc, Vietnam

With quality and productivity of global INFAC, Southeast Asia serves as a production base.

INFAC Jiangsu



INFAC Jiangsu was established in May 2014 in Jiangsu province, China, to tackle the automotive market in Southeast China. INFAC Jiangsu produce vehicle horn, control cable, antenna for automotive for Dongfeng Yueda Kia, Beijing Hyundai, and Hyundai Mobis etc. We are actively pursuing local companies in China by leveraging the geographical advantages.

Date of establishment	: May 8, 2014
Main products	: horn, control cable, feeder cable, antenna
Address	: 52, Ganjiang Road, Yancheng, Jiangsu, China

We are increasing the phase of INFAC In Southeast Chinese automotive market.

INFAC Mexico



INFAC Mexico was established in December 2015 in Monclova city of Coahuila state to ensure competitive price as a ruling base for America market. INFAC Mexico produce control cables, feeder cables, antennas, horns, etc. for Hyundai Motor Brazil (HMB), Hyundai Motor Manufacturing Alabama (HMMA), Kia Motors Manufacturing Georgia (KMMG), GM Mexico and other Latin American and North American customers.

Date of establishment	: December 3, 2015
Main products	: control cable, feeder cable, antenna, horn
Address	: Antiguo Camino a Hermanas #300, Estancias de San Juan Bautista, Monclova, Coahuila, C.P.25733 Mexico

We are growing by using Mexico as a strategic base in Latin and North America.

PART 2

NEW

Infinite Accuracy, zero defect, continuous research and development.  
It is the core of INFAC that makes infinite possibilities.  
INFAC's quality assurance system, customer satisfaction system,  
and quality management system carry out unlimited innovative activities.

► INFAC Quality Management    ► INFAC Products    ► INFAC Customers

# INFAC VALUE

We don't need many words to describe INFAC.

Quality. The beginning and end of

INFAC's core competencies are in strict quality policy.

## ○ Ensure design quality

- New technology, establishing foundation to secure quality of new technology.
- CATIA/Pro-E/Unigraphics, Nastran, Kinematics and durability test equipment

## ○ Securing parts & process quality

- Upbringing part quality by continuous level-up activities
- Real-time SPC management system through global QMS
- Promote core process F/PROOF and ensure traceability of LOT

## ○ Ensure user quality

- Achieve quality goals that meet customer needs and expectations
- IQS, VDS securing field quality

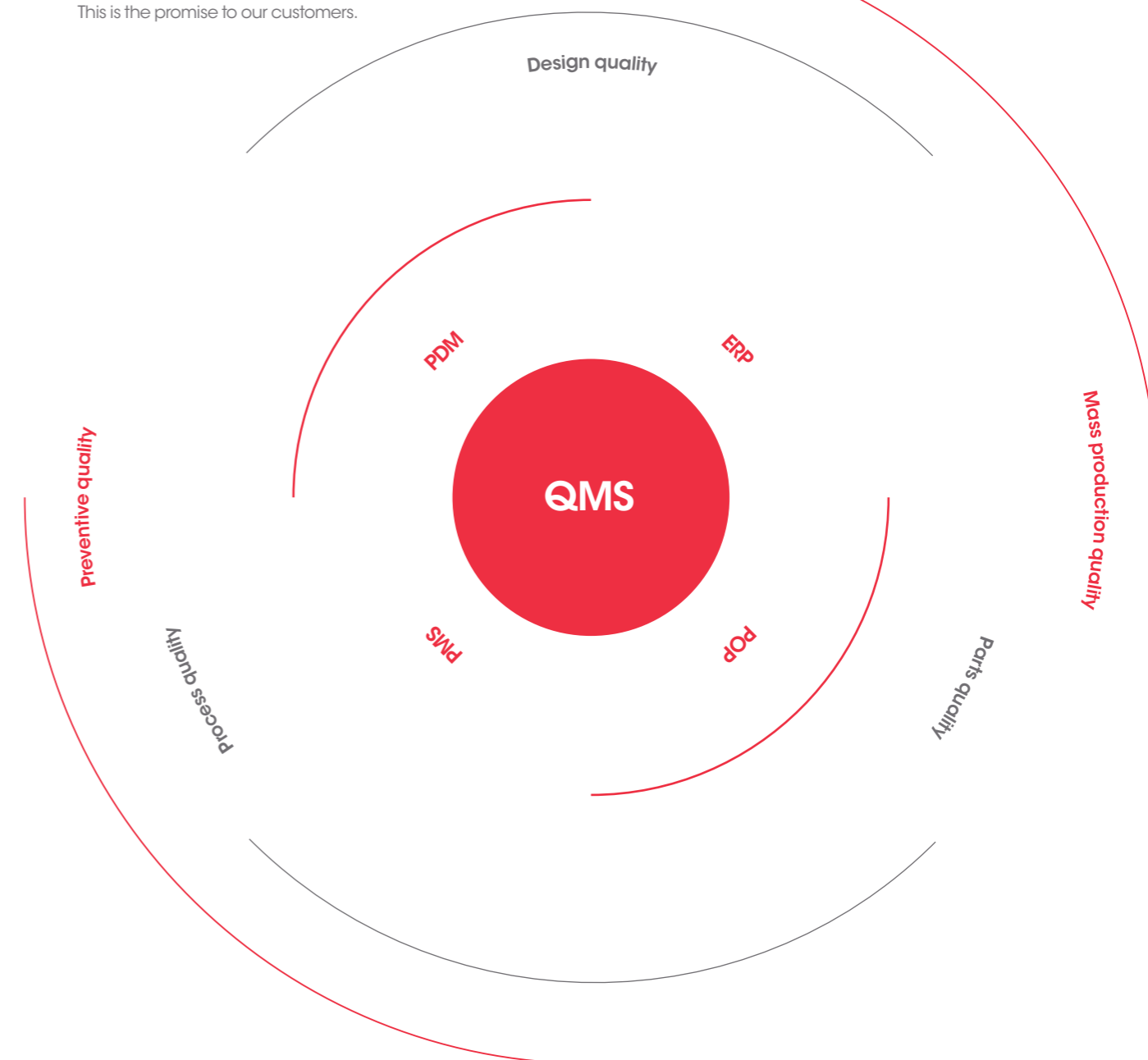
## ○ Ensure quality of service

- Continuous product quality improvement in line with customers' needs
- Maintenance manual for A/S convenience

# QUALITY MANAGEMENT SYSTEM

## Ensuring customers' endless trust through quality assurance

Customer satisfaction, customer trust,  
top quality competitiveness and  
continuous supply of zero defective products.  
This is the promise to our customers.



# INFAC PRODUCTS

INFAC's technology is responsible for the safety and performance of the car.

We know strictly the role and value of the INFAC's products that must be high-quality and zero defect.

Making today's cars more safer and perfect, making tomorrow's cars more innovative, that is the INFAC's technology.

ACTUATOR



CABLE



HORN



ANTENNA



RF CABLE



BMA PLASTIC PARTS



# ACTUATOR

- ▶ Motor Actuator
- ▶ Hydraulic/Pneumatic Actuator
- ▶ Solenoid Actuator



---

We develop and manufacture various system control actuators to improve the performance, convenience, and stability of automobile. From pneumatic control system with diaphragm to the electric control type actuator using solenoid and motor, it is possible to develop the optimum actuator according to the control method required by the vehicle. In addition, depending on the requirements of the system we have sensor integration technology that can measure pressure, stroke, load, etc.

# ANTENNA

- ▶ Smart Key System Antenna
- ▶ Active Antenna



The multimedia system of the car (radio, DMB, DAB satellite radio, navigation) for broadcasting and ITS (Intelligent Traffic Information System) has two-way communication antennas that are integrated; and Shark Fin type and Pole type are available for the type and design of the vehicle. An RF cable that reliably transmits and receives signals to the system with very low loss is applied, which allows e-Call, next generation service, and an antenna that is incorporated to the autonomous safety driving system is an advantage.

# CABLE

- ▶ Control Cable
- ▶ Battery Cable
- ▶ Ignition Cable



INFAC develops and produces cables that connect with various parts of an automobile to deliver physical or electrical energy. In order to easily install on the vehicle, most cables are one-touch installation type, and it has high efficiency and high reliability as it is made with lightweight plastic materials. It is advantageous not only for automotive but also for industrial machinery, ship, aircraft, military tank, and etc.

# HORN

- ▶ Shell Horn
- ▶ Disk Horn
- ▶ Air Horn



The electronic and electric horns are designed to alert danger to vehicles and people through noise to prevent accidents. In the past, electric horns caused users to be uncomfortable as horns were often caused by durability and noise. The electric horn which improved the radiation transient voltage reduced the influence on the electronic parts of the automotive to improve the noise.

# BMA PLASTIC PARTS

- ▶ Parts for Electric Vehicle
- ▶ Parts for Hybrid Electric Vehicle



The battery pack housing is a part that stores the cells connected in series and parallel of the lithium ion battery. It protects the cell from external impact, increases the charging efficiency by sensing each cell voltage and temperature, and BMS (Battery Management System) prevents over-charges which provide stable electrical energy.

# RF CABLE

- ▶ Feeder Cable Assembly



It is transmission cable for transmitting RF signals to a destination in a wired way. Especially in a car, it efficiently transmits various electric signals (radio, DMB, GPS, SDARS, LETC, etc.) received from an antenna to a receiving end (audio, AVN, etc.). In order to minimize frequency-related losses, we typically use RG316 series.

# INFAC

## CUSTOMERS

For over 50 years, we will continue to walk alongside with our customers for  
their development Customer centered, customer satisfaction, customer oriented!  
INFAC, headed towards infinite trust, is with you.

### Automobile Manufacturers



### Automobile Components Manufacturers



PART 3

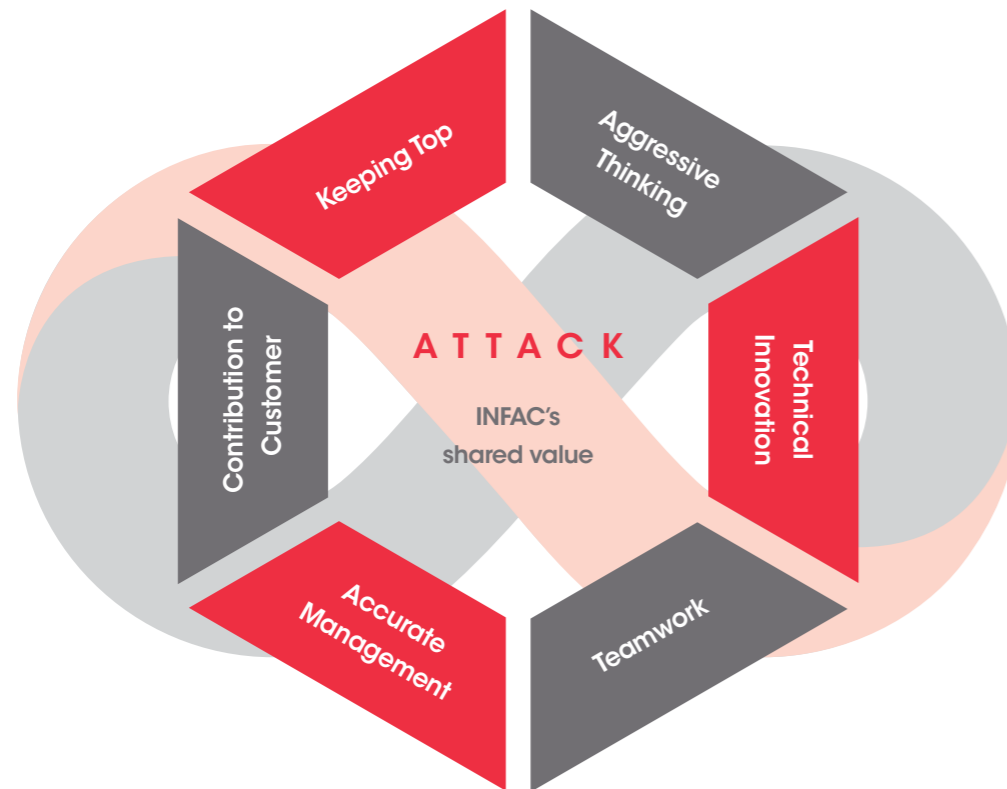
# NEXT

In the past 50 years, INFAC's growth engine was based on human resources and R&D.  
The driving force for the next 50 years will also be human resources and R&D.  
The power of men that lead 100 year enterprise INFAC. The power that grows as we share with  
our partners, our customers, and the community will lead INFAC to the future.

► INFAC talent award   ► INFAC vision   ► INFAC R&D   ► INFAC social contribution

# INFAC PEOPLE

INFAC cheers for passionate and enthusiastic employees.  
INFAC has kept the spirit of youth, and it is the driving force  
That leads the future of INFAC for the next 50 years.



## Aggressive Thinking

a person with active thoughts and actions

## Technical Innovation

a person who takes technology and drives innovation

## Teamwork

a person who participates in an organization based on cooperation and collaboration

## Accurate Management

a person who trusts and believes in the accuracy of his/her work

## Contribution to Customer

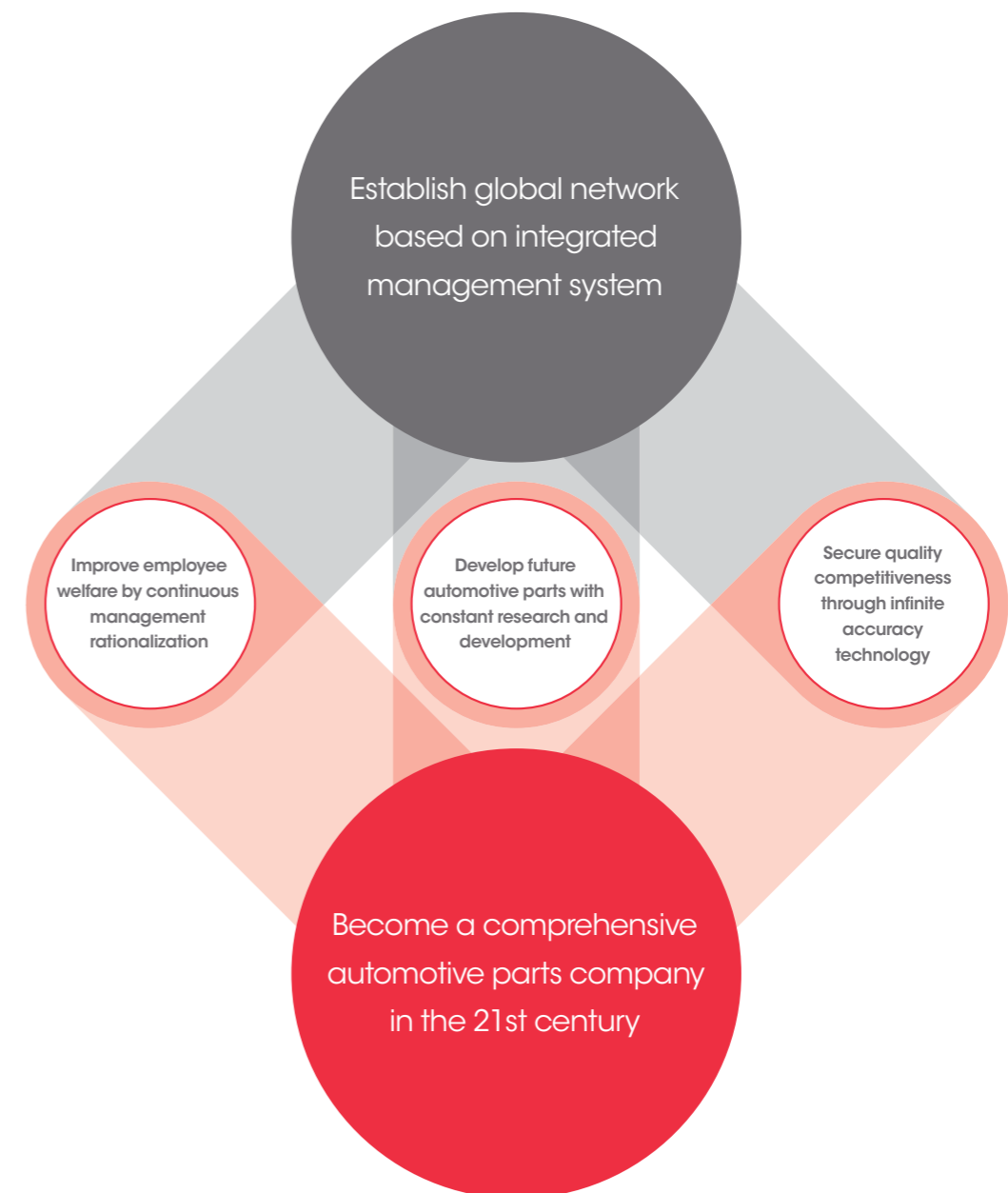
a person who thinks and handles everything from the customer's perspective

## Keeping Top

a person who always strives higher through professionalism.

# INFAC VISION

The challenge and innovation of INFAC will continue tomorrow.  
We will not forget that 'reliable INFAC' and 'INFAC full of  
creative capabilities' are the key to  
becoming a leading automotive parts company in the future.



# INFAC

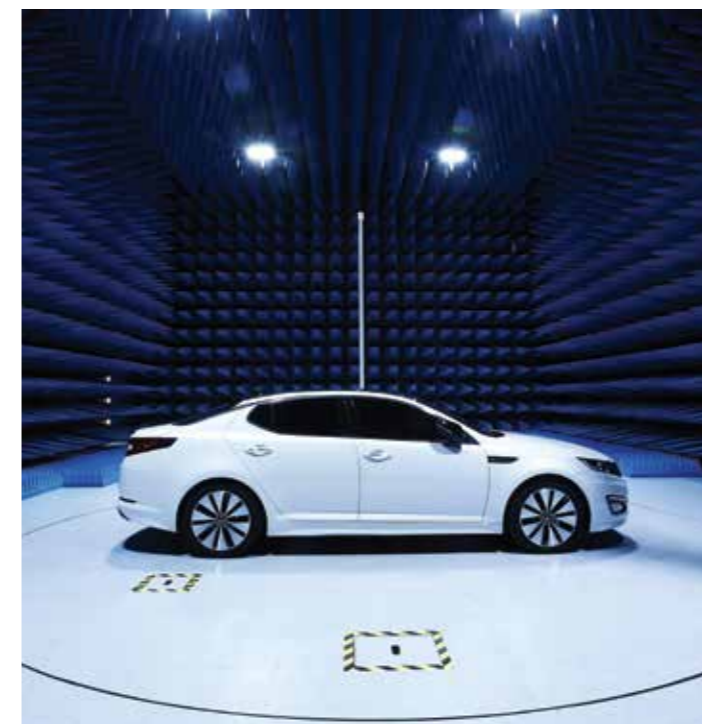
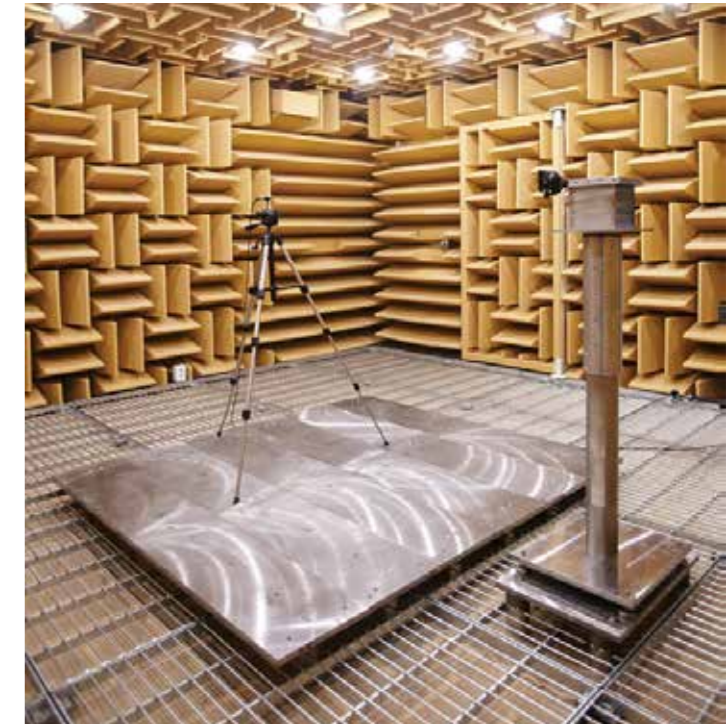
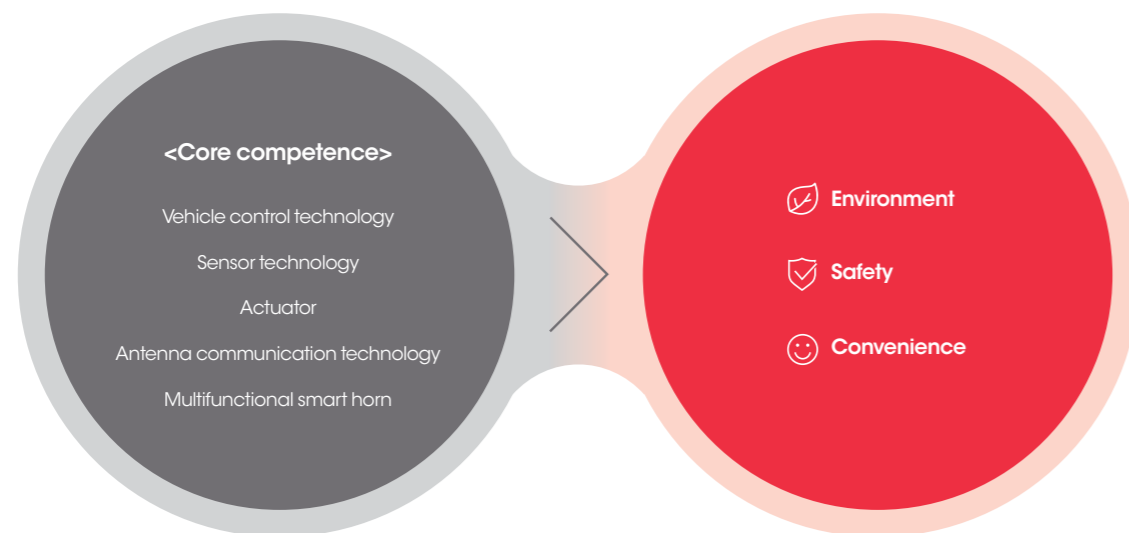
## RESEARCH & DEVELOPMENT

We are constantly challenging to secure and optimize quality competitiveness through infinite accuracy technology.

INFAC has established global research network system and research base through the establishment of integrated technology research institute. In addition to securing global talent and strengthening strategic alliances with overseas global companies, we have established a leading position in the localization of automotive parts through network with domestic and overseas R&D institutions. We are aiming to become a global automotive parts company by expanding the research and development of intelligent automobiles, which are essential for future automobiles, from existing chassis, electric & electronic and driving parts. INFAC is continuously growing with 'upbringing talent' and 'creative value'

### Research strategy and field

- Development of active control core parts (actuator, sensor) convergence technology for environmentally friendly and intelligent vehicles
- Development of antenna and communication module technology of autonomous driving car (V2X/V2I) in wireless environment field
- Development of combined function to prevent safety accidents (active, accident avoidance, alarm) smart horn technology



# INFAC

## CORPORATE SOCIAL RESPONSIBILITY

Building empathy with the community,

Raising the potential for future talents,

Caring for neighbors and the society.

The infinite sharing of INFAC, which is as important as technology and function, will continue.

### Infinite support for future talent | Continuous domestic and overseas scholarship project

Local elementary, middle and high school scholarship support is INFAC's company annual business. Supporting for these basic education groups is part of community supporting projects. In addition, local school donation events are a fast and reliable way to provide talent to local communities. INFAC shares its social responsibility through social contribution activities in the form of scholarship donations to school located in overseas regions where INFAC is located, as well as Korea.



2015 Deliver scholarship in Cheonan arear



INFAC Vina Minhung Middle School



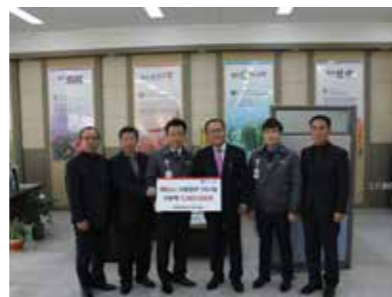
INFAC Vina ChonThanh High School



INFAC Sanhe Regional Scholarship



INFAC Cable MOU with Daesogeumwang High School



INFAC Cable Regional Scholarship

### Community service infinite sharing | Supporting the underprivileged and local children's center project

The power that brings happiness and satisfaction to the community. It is the happy laughter of children. The volunteer service for each INFAC company brings an opportunity that makes employees of INFAC happy. INFAC's support for the underprivileged and children center has been systematically carried out under the support of major customers such as Hyundai-Kia Motors as well as the independent planning in the INFAC community. The event of sharing the warmth, filling the needs and adding the heart will continue with the history of INFAC.



Delivery of briquettes of love



Blood donation of love



Community and service at Chung-ju Sacred Heart Rehabilitation Center for the blind



Visit to local children's center



Donation to Korean Association for Children with Leukemia and Cancer (KACLC)



Community and service at an orphanage

NOW  
NEW  
NEXT

Quality that is reliable,

Products that continue to develop,

Challenges and efforts toward tomorrow.

Infinite quality, infinite trust, infinite satisfaction,

infinitely growing INFAC.

We are making the future of safe and innovative cars.